

Garments Maker LTD.

COMPANY PROFILE



WHO ARE WE

Garments Maker LTD (GML) is your end-to-end apparel sourcing partner, built on a foundation of owned operations and a trusted manufacturing network.

We are not intermediaries; we are your direct, on-the-ground team in Asia. With our own offices in Bangladesh & China for expert fabric sourcing and in Hong Kong for streamlined finance & logistics, we provide unparalleled control and transparency.

Our strength is amplified by our **curated network of specialized factories** across Bangladesh. This includes:

- High capacity, compliant facilities for major retailers
- Specialized, agile units for low MOQ and complex categories like sweaters, jackets and lingerie

This powerful structure allows us to meticulously match your order to the perfect production partner, ensuring optimal quality, cost and delivery for every project.

By integrating **design, sourcing, production and quality control** under one managed workflow, we de-risk your supply-chain and become a seamless extension of your brand.



MISSION



We leverage our owned on-the-ground presence in Bangladesh & China to provide a seamlessly managed supply chain, guaranteeing cost efficiency, quality control and on time delivery.

Your product deserves a
STORY, not just a supply chain.

MISSION



We leverage our owned on-the-ground presence in Bangladesh & China to provide a seamlessly managed supply chain, guaranteeing cost efficiency, quality control and on time delivery.

VISION



We aim to be the invisible engine of your apparel line – the partner you trust so completely that sourcing becomes a competitive advantage, not an operational headache

GOAL



- Drive Cost Efficiency
- Ensure Product Excellence
- Execute with Agility

OUR SERVICES...



DESIGN & DEVELOPMENT



- Transforming market trends into production-ready design
- Rapid sampling to accelerate your time-to-market





INTELLIGENT MERCHANDISING

- Comprehensive material sourcing with detailed cost analysis
- Performance based supplier evaluation

FABRIC EXCELLENCE

- 20+ years of specialized fabric expertise
- Direct mill relationships ensuring quality & delivery precision





SMART PRODUCTION PLACEMENT



- Curated network of compliant & non-compliant manufacturer
- Data-driven factory selection based on capacity & performance



QUALITY ASSURANCE & CONTROL

- Quality Assurance
- In-line QC | Your Standards | Defect Prevention
- Supply Chain & Compliance
- Vetted Factories | Ethical Audit | Brand Safety
- Logistics & Delivery
- Door-to-Door | Real-Time Tracking | On-time

PRODUCT CATEGORY

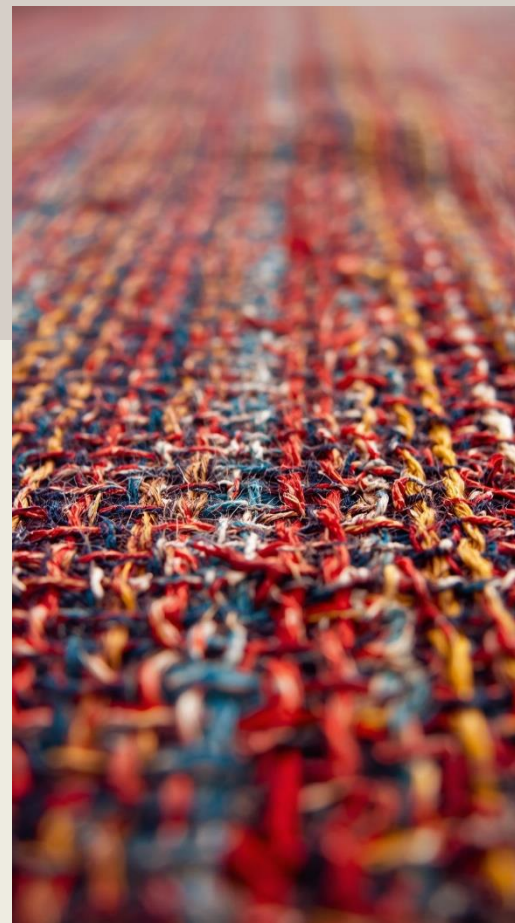
From daily essentials to complex technical garments – your single, trusted partner for a diverse range of apparel and textile products



Heavy Knit



Circular Knit



Woven



Lingerie



HomeTextile

WHY US



Trusted Manufacturing Partner

Network of Compliant Factories
Strong Sources in Bangladesh & China



Quality & Delivery

Experienced Inline QA & QC Teams
Real-Time Production Tracking
Integrated Supply Chain Support
On-Time Delivery



Flexible & Efficient Operations

Low MOQ Fitting The Need
Competitive & Transparent Pricing
Fast Sampling

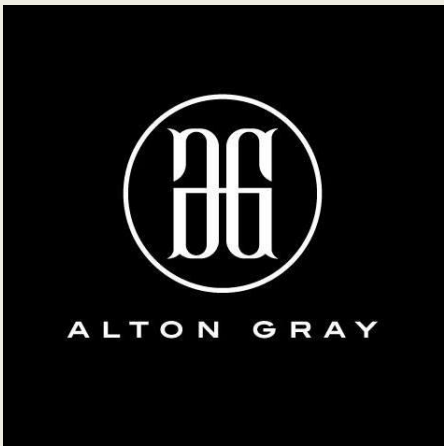


Customer Centric

Skilled Merchandising Team
Highly Trained Tech Support Team
Fast, Responsive Client Support
End-to-End Production Assistance



OUR CLIENTELE



Garments Maker Ltd.

Let's Connect

Mamoon Siddique
Director
+880 1711 566 046
mamoon@garmentsmaker-bd.com

Mohammad Razaul Karim
Chairman
karim@garmentsmaker-bd.com



garmentsmaker-bd.com